

G FORCE[®]

EWSG

Extreme Weather Smoke Generator

GTI

Global Technology Integrators

HOT/COLD/WET/DUST EXTREME ENVIROMENTS



Extreme Output

Weather Resistant

Engineered in Germany

The G Force Extreme Weather Smoke Generator is a High-Quality IP 64 machine. The EWSG was developed for Extreme environments, Hot / Cold / Wet / Dust. With three steps of smoke / fog output, the machine is easy to control even with gloves. The stainless-steel enclosure is resistant against water and heat. Available with optional Floor or Wall mount

New features guarantee a much simpler operation - place and fog, reducing the amount of time needed to set up the machine.

Features

- Control panel

The control panel with LED-display, simple symbols allow for easy operation. It also protects the control buttons against dirt.

- Finest adjustments of the output

With the rotary switch you can choose between three different fog modes. At stage one, the unit fogs down until the lower limit temperature is reached and automatically stops the fogging process. At level 2, the unit automatically lowers when the temperature in the heater drops, causing the Fire Trainer to continuously fog. On the third stage, the unit starts directly on the reduced output that it can continuously maintain.

Safety

The permanent temperature control on the microprocessors always guarantees a correct evaporation temperature. This ensures that no harmful substances are produced by evaporation that is too hot or that the unit "spits" unevaporated fluid.

Operation

The EWSG can be operated in stand-alone mode. In stand-alone operation, the fogging process is started by pressing the start button once. If this is not actuated repeatedly, the machine will fog until the limit temperature is reached.

Fluid

The EWSG has a quick release fluid system that allows the canister to be changed in seconds.

The following G-Force fog fluids are available for the EWSG:

- Quick-Fog (thick, quick disappearing fluid)
- Regular-Fog (thick, long lasting fluid)
- Slow-Fog (thick, extremely long-lasting fluid)

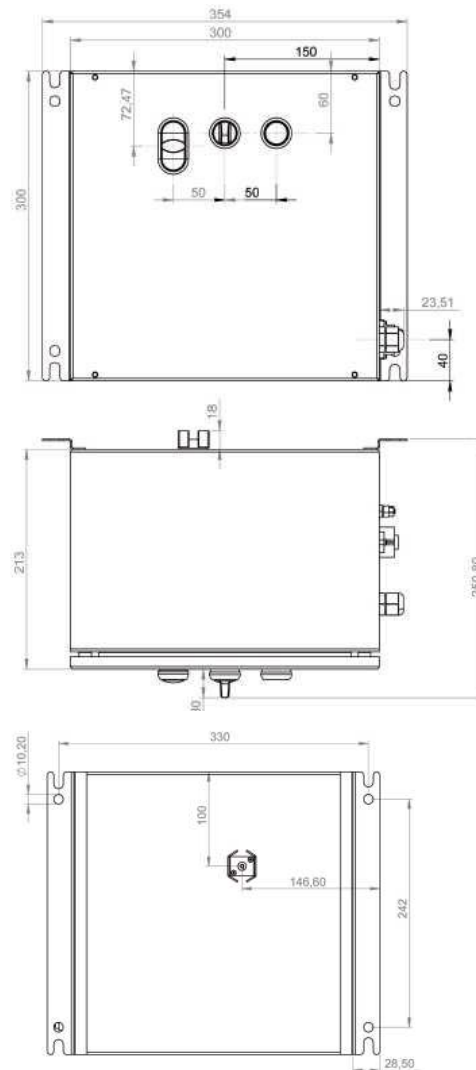
Technical data

Procedure	vaporizing fog generator
Power requirement	1300 Watt
Voltage	120V/60Hz
Warm up time	approx. 7 min.
Fluid consumption at max. output	120 ml/ min.
Fluid consumption at continuous output	35 ml/ min.
Fluid tank capacity	5 liter
Fog output	3 Steps controllable
Output projection	max. 15 m
Fogging time at < 50% output	continuous output
Control	DMX 512 0 - 10 V analog Stand-alone-Mode Radio remote (option)
Temperature control	Microprocessor controlled
Overheating protection	Heater block/Thermostat Pump/Thermal switch
Dimensions (L x W x H)	33.5 x 25.9 x 32 cm
Weight without bottle	approx. 12.1 kg

Advantages

- IP 64
- Easy handling
- Powerful output
- Fogging output is adjustable in steps of ~30 sec on 100% Continuous smoke / Fog <50% Stand alone, analog 0-10V
- Continuous output
- Easy bottle changing with quick-out connectors
- German Engineered
- USA Assembled and Serviced
- Can be controlled with a radio remote control or cable remote control. In addition, the optionally available timer or DMX converter can also be connected. In addition, the analog input offers the possibility of controlling the device via PLC.

Dimensions



Accessories

- GTI Versa 45° / 90° Floor Mount
- Wall Mount
- Ducting adaptor
- XLR-remote
- Radio remote
- Case

Warranty

3-Years If only original G-Force fluid is used

Service

Based on the strong partnership with the German manufacturer OTTEC Technology GmbH, Global Technology Integrators can provide quick and easy service which guarantees the high quality of all products with assembly and service in the US.

Global Technology Integrators, LLC
3251 Progress Drive /Suite 135
Orlando, FL 32826
407.401.8919
tony.oxford@gtintegrators.com